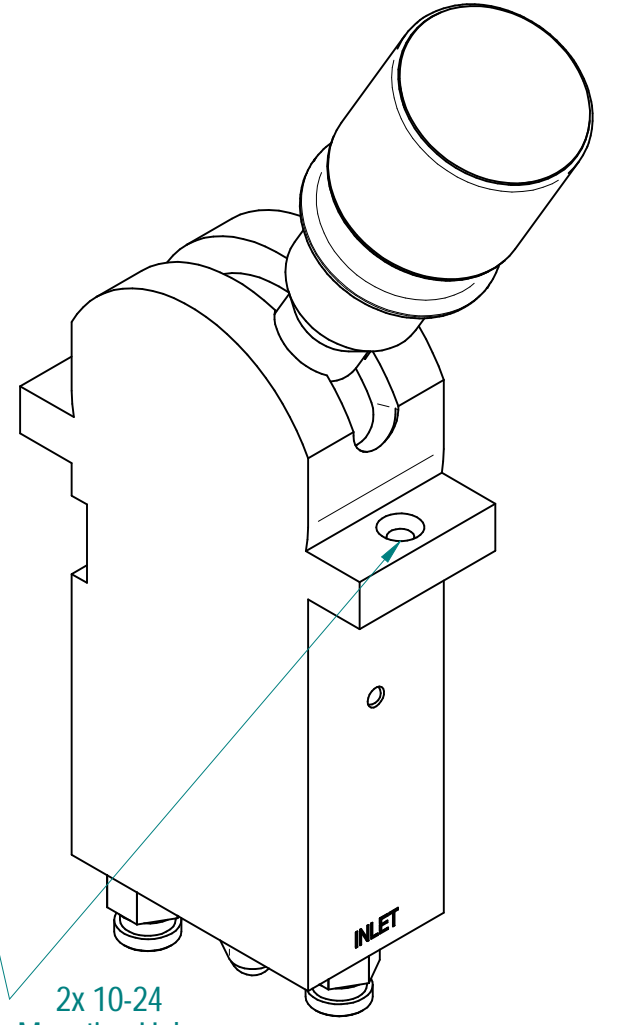
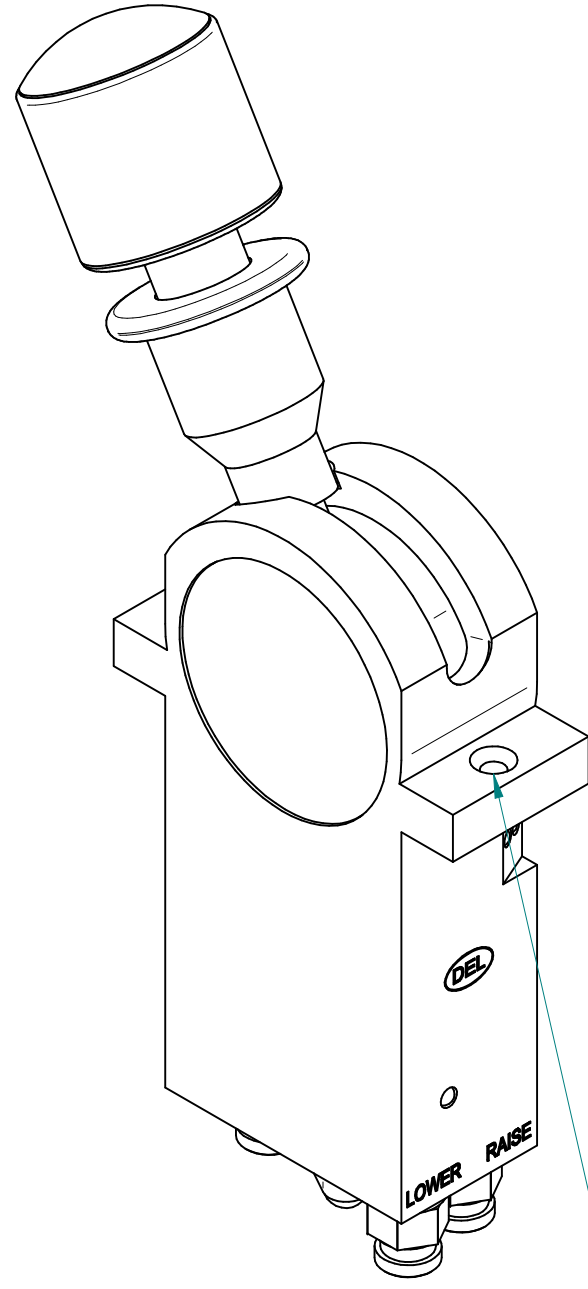
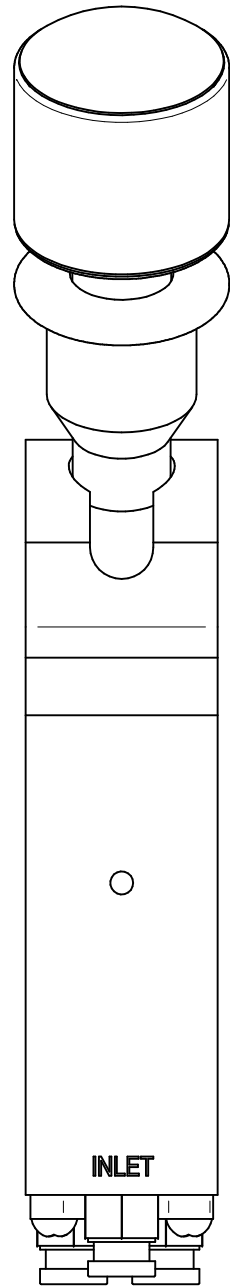
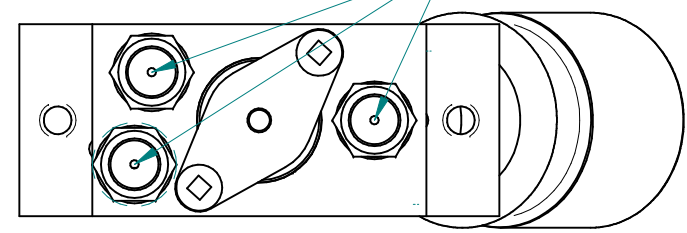
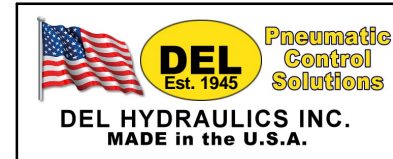


3x 1/8" NPT ports  
with 1/4" push to  
connect fittings pre-installed



2x 10-24  
Mounting Holes



**DEL HYDRAULICS INC.**  
MADE in the U.S.A.

REV.	DESCRIPTION	DATE
REVISION HISTORY		
	<b>AIR VALVE</b> 2202-99-01 - Dimensional	SHEET: 1 OF 1
GEN. TOL:	GENERAL Ra: 80 μIN	CHKD:
.XXX ± .005	GEN. CONCENTRICITY: .002 TIR	DRWN: O.S. APR. 15/ 22
.XX ± .01	CORNERS/ EDGES: .005 R/CH	REVD:
X ± .1		
WEIGHT: 1.00 lbm	VOLUME: 4.49 in <sup>3</sup>	MAT'L: ALUMINUM
UNITS: INCHES	MAKE FROM: SEE COMP. DWG.	REV: .